



Xilion webservices
De Vlei 24
1852 KE Heiloo
THE NETHERLANDS / PAYS-BAS

Phone +31 (0)6 42.30.15.88
Fax +31 (0)72 30.10.542
Website www.xilion.eu Explorers
E-mail info@xilion.nl

K.v.K. Amsterdam 34185744
BTW NL8119.188.04.B01
IBAN NL15ABNA0481102442
BIC ABNANL2A

HOW TO OBTAIN MY CLIENT APP?

This guide tells you how to find and install your Client app on your PC, laptop, tablet or smartphone. After following these steps, you can sign-in to The French Explorer.

The content describes the installation of the Client-app on Windows, Windows 8.1 RT (Tablet), Windows Phone 8.1, Android, Mac, iPad en iPhone operating systems.

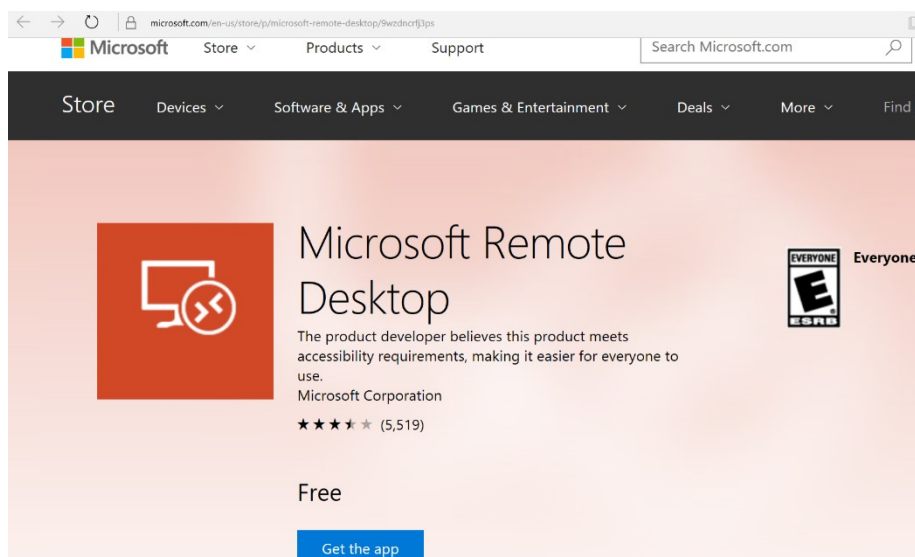
The name of the client-app is: **Microsoft Remote Desktop app**

The screenshots in this guide are in the English/Dutch language. However the screens and texts, appears on your computer, are the language of your country. E.g. when you are in France, the screens and texts are in the French language.

Download the app from the webshop of your provider

When my device use a Windows system

Click or tap <https://www.microsoft.com/en-us/store/p/microsoft-remote-desktop/9wzdncrfj3ps>



You see a screen like this.

Window ask if you want to get the **Remote Desktop client**.

Click or tap on the **Blue Button** [Get the app] and follow the instructions.

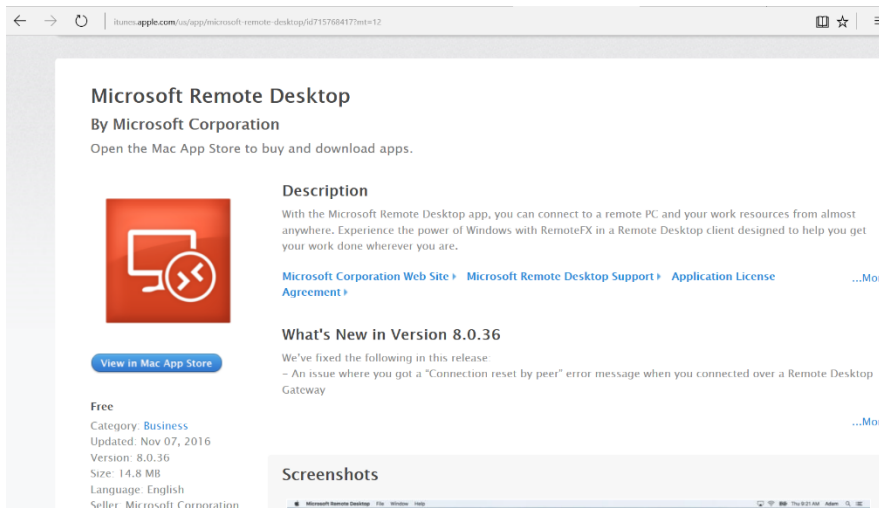
At install there appears a certificate of the publisher. Be aware that the publisher of the certificate is **Microsoft!**

NB. When you open the Remote Desktop, fill in the **PC Gateway** the URL you obtain from Xilion.



When my device is an Apple Mac, iPad or iPhone

Click or tap <https://itunes.apple.com/us/app/microsoft-remote-desktop/id715768417?mt=12>



You see a screen like this.

Window ask if you want to get the **Remote Desktop client**.

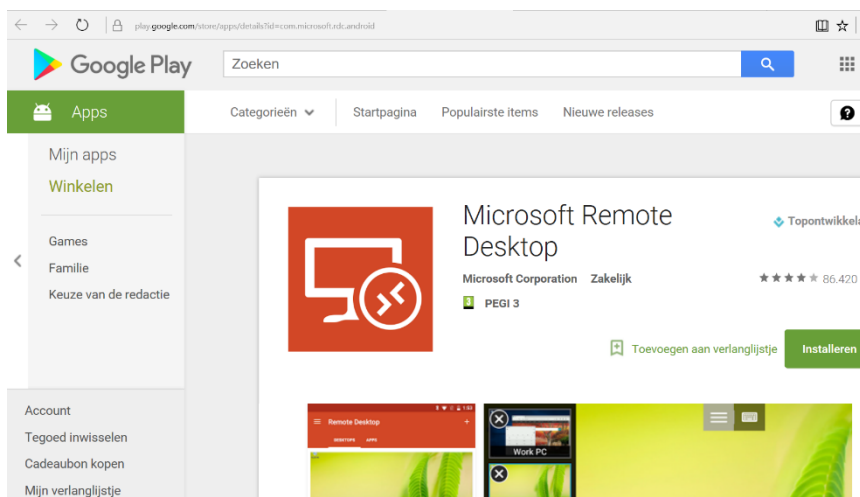
Click or tap on the **Blue Button** [View in .. store] and follow the instructions.

At install there appears a certificate of the publisher. Be aware that the publisher of the certificate is **Microsoft!**

NB. When you open the Remote Desktop, fill in the **PC Gateway** the URL you obtain from Xilion.

When my device is an Android laptop, tablet or smartphone

Click or tap <https://play.google.com/store/apps/details?id=com.microsoft.rdc.android>



You see a screen like this.

Window ask if you want to get the **Remote Desktop client**.

Click or tap on the **Green Button** [Install] and follow the instructions.

At install there appears a certificate of the publisher. Be aware that the publisher of the certificate is **Microsoft!**

NB. When you open the Remote Desktop, fill in the **PC Gateway** the URL you obtain from Xilion.